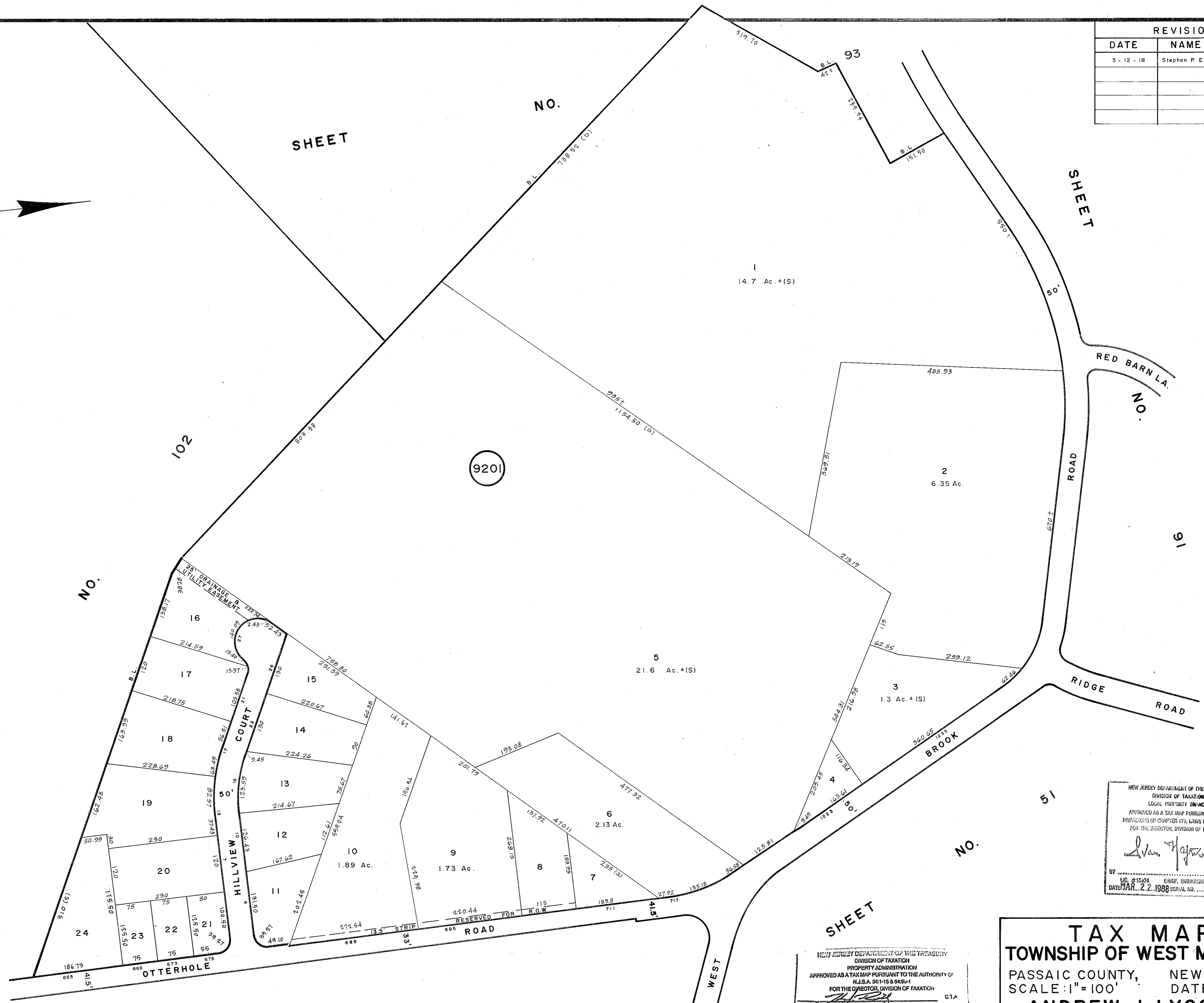
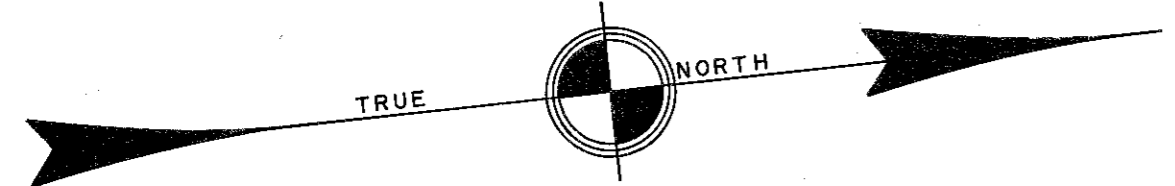


REVISIONS		
DATE	NAME	NO.
3-12-18	Stephen P. Eld	30081



SHEET

SHEET

SHEET

SHEET

SHEET

NO.

NO.

NO.

16

51

NO.

NO.

109

NEW JERSEY DEPARTMENT OF THE TREASURY
 DIVISION OF TAXATION
 PROPERTY ADMINISTRATION
 APPROVED AS A TAX MAP PURSUANT TO THE AUTHORITY OF
 N.J.S.A. 54:1-15 & 54:5-1
 FOR THE DIRECTOR, DIVISION OF TAXATION
 THOMAS J. HELL, CHIEF, LOCAL PROPERTY, FIELD ASSISTANT
 Andrew J. Lycosky, SUPERVISING FIELD REPRESENTATIVE
 DATE: JUL 11 2011 SERIAL NO. 971

NEW JERSEY DEPARTMENT OF THE TREASURY
 DIVISION OF TAXATION
 LOCAL PROPERTY DIVISION
 APPROVED AS A TAX MAP PURSUANT TO THE
 PROVISIONS OF CHAPTER 175, LAWS OF 1919, ETC.
 FOR THE DIRECTOR, DIVISION OF TAXATION
 Andrew J. Lycosky
 BY: Andrew J. Lycosky, P.E. & L.S.
 DATE: JAN. 22, 1988 SERIAL NO. 980

TAX MAP
TOWNSHIP OF WEST MILFORD
 PASSAIC COUNTY, NEW JERSEY
 SCALE: 1"=100' DATE: 9-30-86
ANDREW J. LYCOSKY P.E. & L.S.
 TOWNSHIP ENGINEER
 1480 UNION VALLEY ROAD
 WEST MILFORD