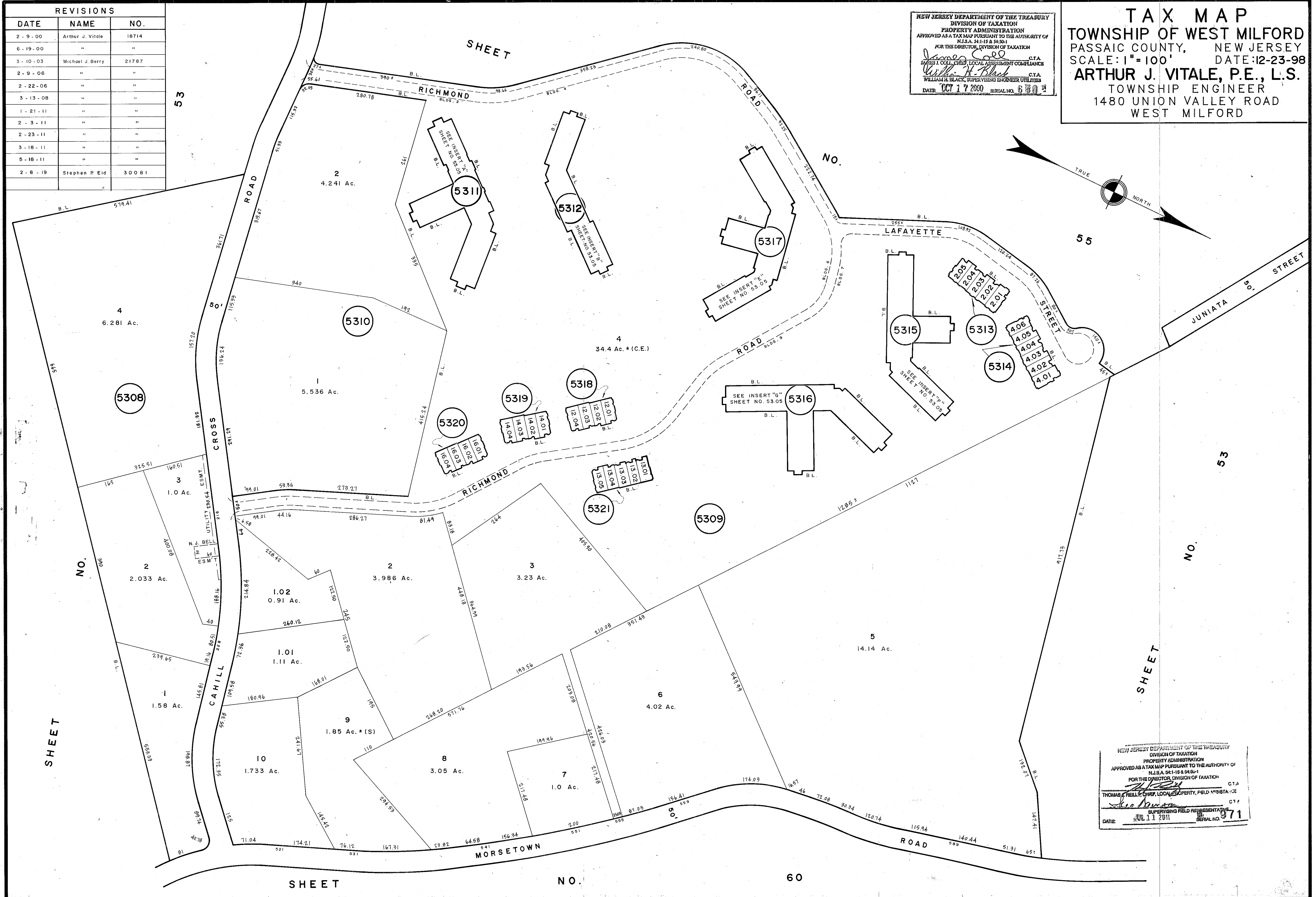


TAX MAP
 TOWNSHIP OF WEST MILFORD
 PASSAIC COUNTY, NEW JERSEY
 SCALE: 1"=100' DATE: 12-23-98
ARTHUR J. VITALE, P.E., L.S.
 TOWNSHIP ENGINEER
 1480 UNION VALLEY ROAD
 WEST MILFORD

NEW JERSEY DEPARTMENT OF THE TREASURY
 DIVISION OF TAXATION
 PROPERTY ADMINISTRATION
 APPROVED AS A TAX MAP PURSUANT TO THE AUTHORITY OF
 N.J.S.A. 54:15 & 54:94
 FOR THE DIRECTOR, DIVISION OF TAXATION
James Cole C.T.A.
 JAMES I. COLE, CHIEF, LOCAL ASSESSMENT COMPLIANCE
William H. Black C.T.A.
 WILLIAM H. BLACK, SUPERVISING ENGINEER UTILITIES
 DATE: OCT 17 2000 SERIAL NO. 6801

REVISIONS		
DATE	NAME	NO.
2-9-00	Arthur J. Vitale	18714
6-19-00	"	"
3-10-03	Michael J. Berry	21787
2-9-06	"	"
2-22-06	"	"
3-13-08	"	"
1-21-11	"	"
2-3-11	"	"
2-23-11	"	"
3-18-11	"	"
5-18-11	"	"
2-8-19	Stephen P. Eid	30081



NEW JERSEY DEPARTMENT OF THE TREASURY
 DIVISION OF TAXATION
 PROPERTY ADMINISTRATION
 APPROVED AS A TAX MAP PURSUANT TO THE AUTHORITY OF
 N.J.S.A. 54:15 & 54:94
 FOR THE DIRECTOR, DIVISION OF TAXATION
Thomas A. Kelly C.T.A.
 THOMAS A. KELLY, CHIEF, LOCAL ASSESSMENT COMPLIANCE
William H. Black C.T.A.
 WILLIAM H. BLACK, SUPERVISING ENGINEER UTILITIES
 DATE: JUL 11 2001 SERIAL NO. 971