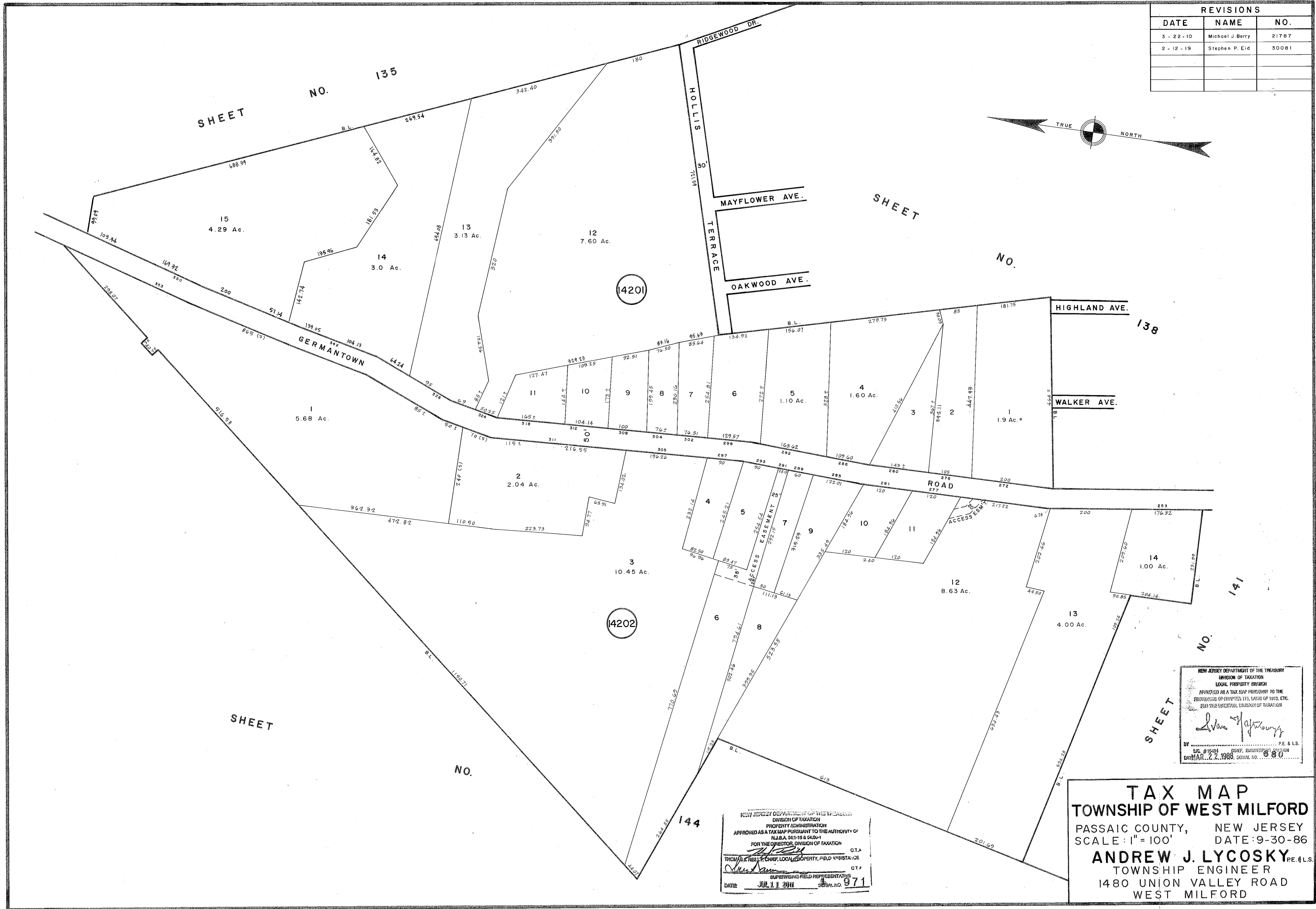
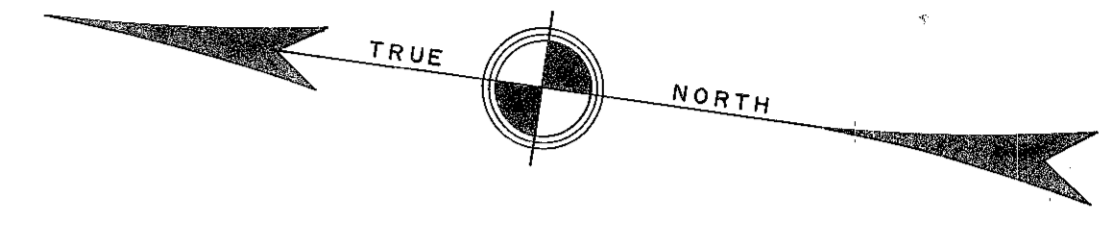


REVISIONS		
DATE	NAME	NO.
3 - 22 - 10	Michael J. Berry	21787
2 - 12 - 19	Stephen P. Eid	30081



NEW JERSEY DEPARTMENT OF THE TREASURY
 DIVISION OF TAXATION
 LOCAL PROPERTY TAXATION
 APPROVED AS A TAX MAP PURSUANT TO THE
 PROVISIONS OF CHAPTER 175, LAWS OF 1915, ETC.
 BY THE DIRECTOR, DIVISION OF TAXATION

Stephen P. Eid

BY LIC. #15484 ENGINEER, SURVEYING DIVISION
 DATE MAR. 22, 1988. SERIAL NO. 680

NEW JERSEY DEPARTMENT OF THE TREASURY
 DIVISION OF TAXATION
 PROPERTY ADMINISTRATION
 APPROVED AS A TAX MAP PURSUANT TO THE AUTHORITY OF
 N.J.S.A. 54:1-15 & 54:2-1
 FOR THE DIRECTOR, DIVISION OF TAXATION

THOMAS J. REILLY, CHIEF, LOCAL PROPERTY, FIELD ASSISTANCE
 SUPERVISING FIELD REPRESENTATIVE
 DATE: JUL 11 1988 SERIAL NO. 971

TAX MAP
TOWNSHIP OF WEST MILFORD
 PASSAIC COUNTY, NEW JERSEY
 SCALE: 1" = 100' DATE: 9-30-86
ANDREW J. LYCOSKY P.E. & L.S.
 TOWNSHIP ENGINEER
 1480 UNION VALLEY ROAD
 WEST MILFORD