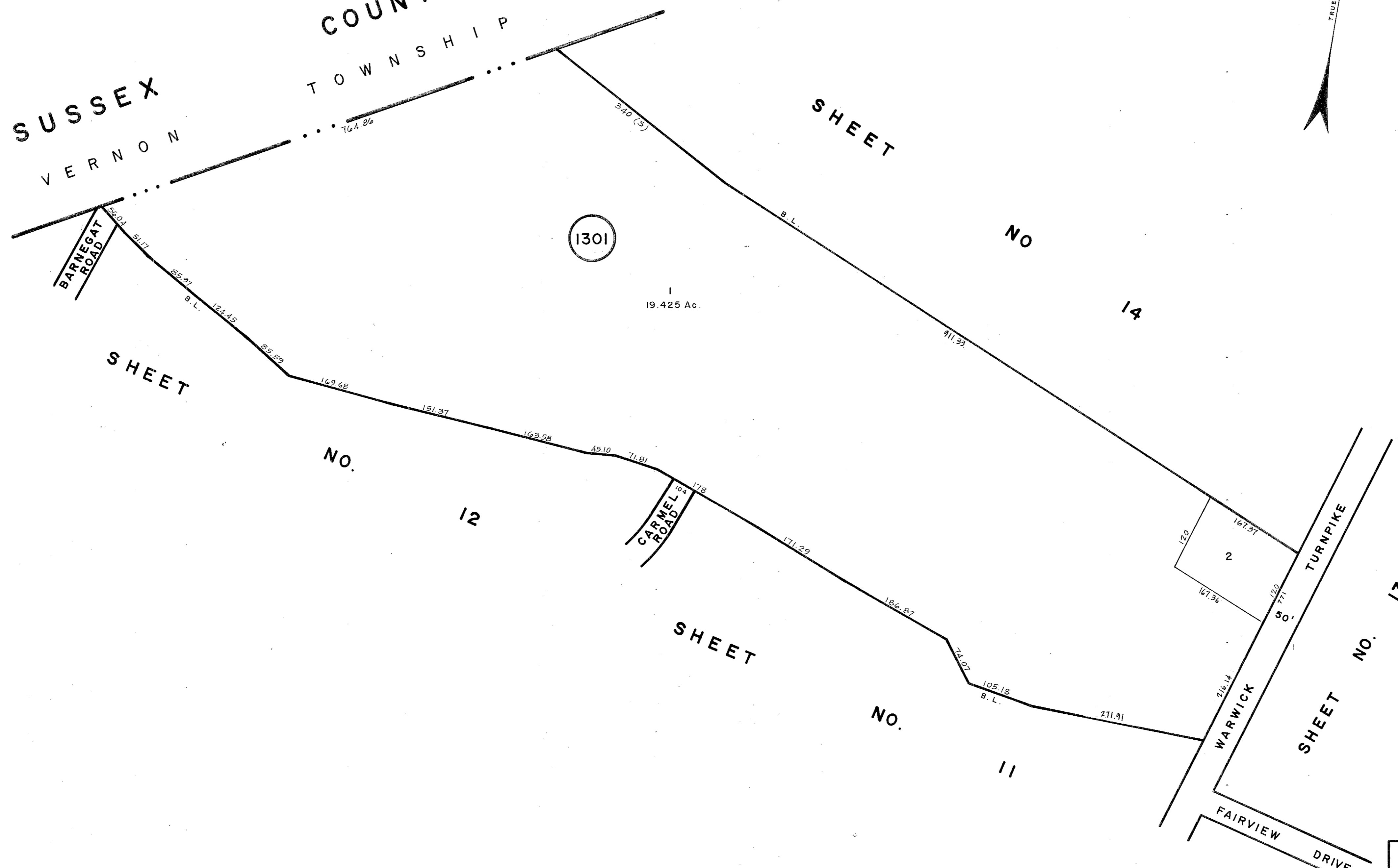
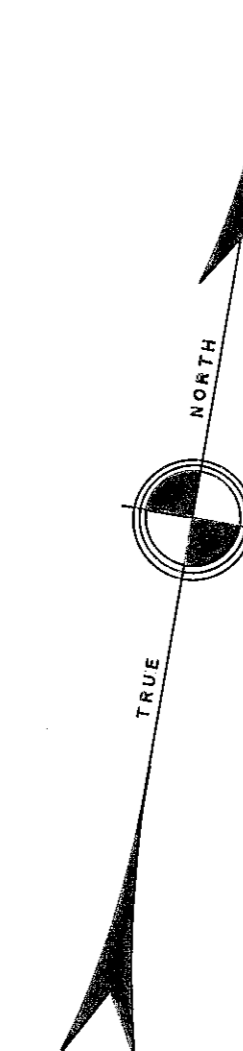


REVISIONS		
DATE	NAME	NO.
4-30-18	Stephen P. Eid	30081

SUSSEX COUNTY
VERNON TOWNSHIP



1301

19.425 Ac.

NEW JERSEY DEPARTMENT OF THE TREASURY
DIVISION OF TAXATION
LOCAL PROPERTY OFFICE
APPROVED AS A TAX MAP PURSUANT TO THE
PROVISIONS OF CHAPTER 175, LAWS OF 1986, ETC.
FOR THE SUPERVISOR, DIVISION OF TAXATION

Thomas J. Kelly
LIC. 21534 CHIEF, LOCAL PROPERTY, FIELD ASSISTANCE
DATE MAR. 22, 1988 SERIAL NO. 480

NEW JERSEY DEPARTMENT OF THE TREASURY
DIVISION OF TAXATION
PROPERTY ADMINISTRATION
APPROVED AS A TAX MAP PURSUANT TO THE AUTHORITY OF
N.J.S.A. 54:1-19 & 54:2-1
FOR THE DIRECTOR, DIVISION OF TAXATION

Steve Anson
SUPERVISING FIELD REPRESENTATIVE
DATE: JUL 12 2011 SERIAL NO. 371

TAX MAP
TOWNSHIP OF WEST MILFORD
PASSAIC COUNTY, NEW JERSEY
SCALE: 1" = 100' DATE: 9-30-86
ANDREW J. LYCOSKY P.E. & L.S.
TOWNSHIP ENGINEER
1480 UNION VALLEY ROAD
WEST MILFORD