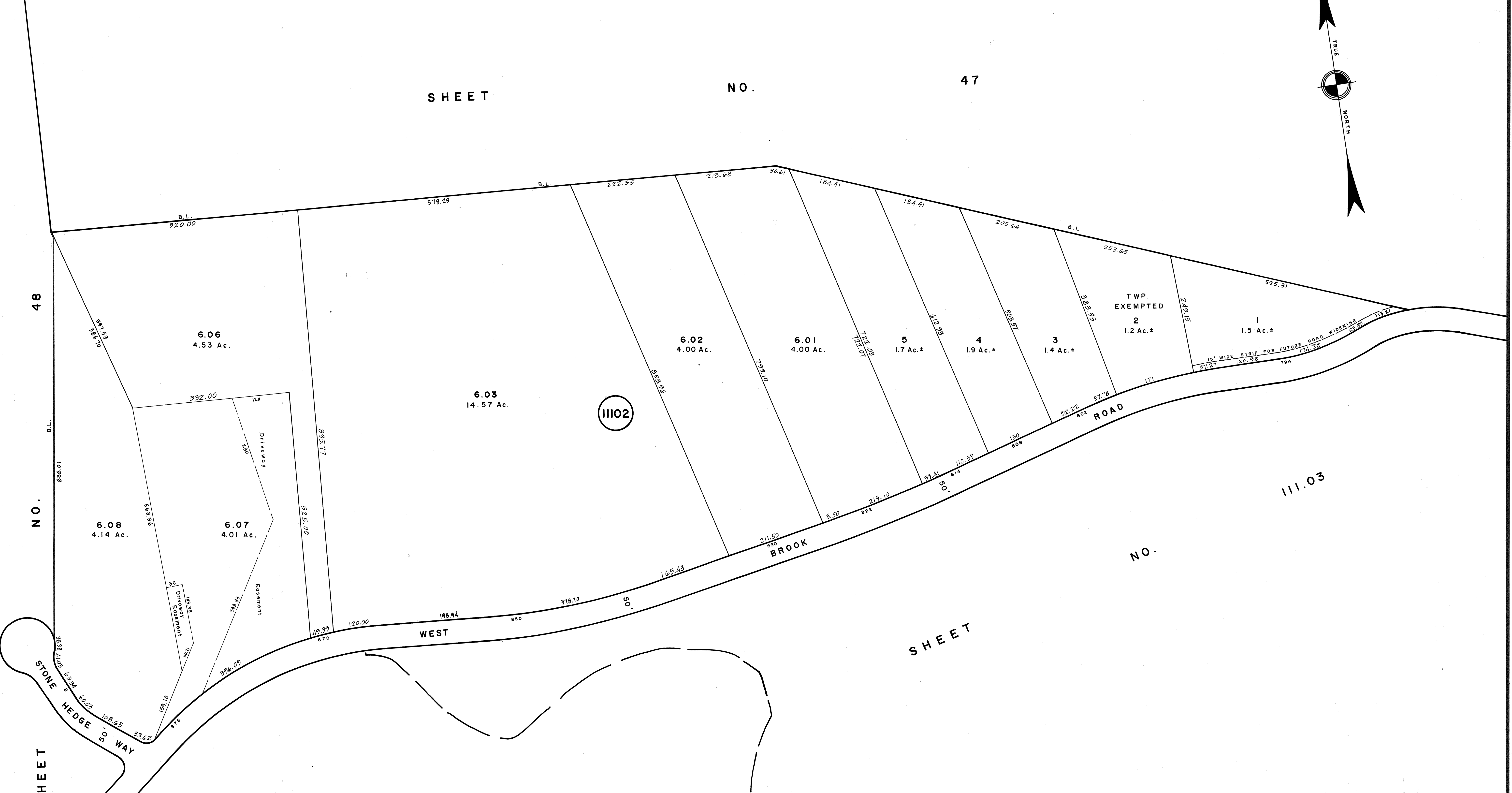


REVISIONS		
DATE	NAME	NO.
3 - 22 - 04	Michael J. Berry	21787
3 - 16 - 05	"	"
2 - 15 - 11	"	"



SHEET NO. 48

SHEET NO. 111

SHEET NO. 47

SHEET NO. 111

SHEET NO. 111.03

NEW JERSEY DEPARTMENT OF THE TREASURY
DIVISION OF TAXATION
PROPERTY ADMINISTRATION
APPROVED AS A TAX MAP PURSUANT TO THE AUTHORITY OF
N.J.S.A. 54:15-8 & 54:50-1
FOR THE DIRECTOR, DIVISION OF TAXATION
THOMAS C. HELL, CHIEF, LOCAL PROPERTY, FIELD ASSISTANCE
SUPERVISING FIELD REPRESENTATIVE
DATE: JUL 11 2011 SERIAL NO. 871

NEW JERSEY DEPARTMENT OF THE TREASURY
DIVISION OF TAXATION
PROPERTY ADMINISTRATION
APPROVED AS A TAX MAP PURSUANT TO THE AUTHORITY OF
N.J.S.A. 54:15-8 & 54:50-1
FOR THE DIRECTOR, DIVISION OF TAXATION
James J. Coll, CHIEF, LOCAL ASSESSMENT COMPLIANCE
SUPERVISING ENGINEER UTILITIES
DATE: OCT 17 2000 SERIAL NO. 680

TAX MAP
TOWNSHIP OF WEST MILFORD
PASSAIC COUNTY, NEW JERSEY
SCALE: 1" = 100' DATE: 12-23-98
ARTHUR J. VITALE, P.E., L.S.
TOWNSHIP ENGINEER
1480 UNION VALLEY ROAD
WEST MILFORD