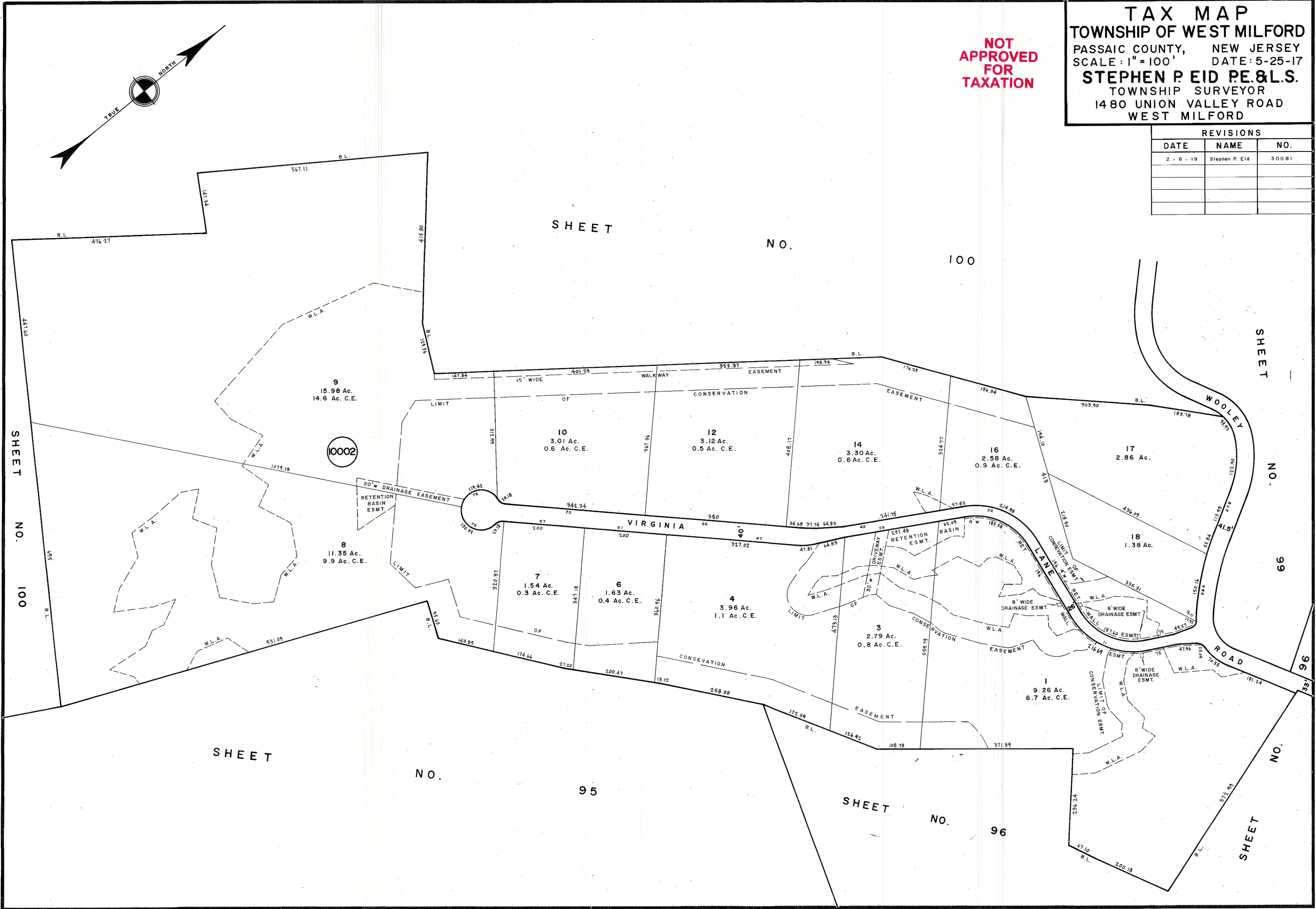
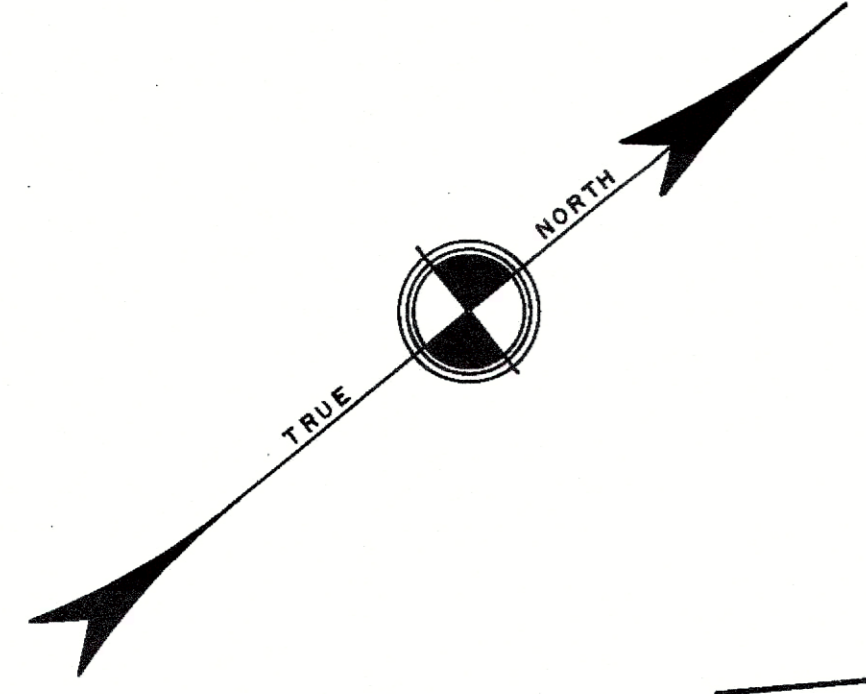


TAX MAP
TOWNSHIP OF WEST MILFORD
 PASSAIC COUNTY, NEW JERSEY
 SCALE: 1" = 100' DATE: 5-25-17
STEPHEN P. EID P.E. & L.S.
 TOWNSHIP SURVEYOR
 1480 UNION VALLEY ROAD
 WEST MILFORD

**NOT
 APPROVED
 FOR
 TAXATION**

REVISIONS		
DATE	NAME	NO.
2 - 6 - 19	Stephen P. Eid	30081



SHEET NO. 100

SHEET NO. 100

SHEET NO. 99

SHEET NO. 95

SHEET NO. 96